

Bond

No.1 for exam success

11+ Maths

Multiple-choice Test Papers Pack 1 Test 2

Read the following carefully:

- Do not begin the test or open this booklet until told to do so
- Work as quickly and as carefully as you can
- Answers should be marked in pencil in the answer booklet provided, not in this test booklet
- You may do rough working on a separate sheet of paper
- If you make a mistake rub out the mistake and write the new answer clearly
- Be careful to keep your place in the accompanying answer booklet
- You will have 50 minutes to complete the test
- Calculators should not be used

OXFORD

UNIVERSITY PRESS

Great Clarendon Street, Oxford, OX2 6DP, United Kingdom

Oxford University Press is a department of the University of Oxford. It furthers the University's objective of excellence in research, scholarship, and education by publishing worldwide. Oxford is a registered trade mark of Oxford University Press in the UK and in certain other countries

Text © Andrew Baines 2015

Illustrations © Oxford University Press 2015

The moral rights of the authors have been asserted

First published in 2015

All rights reserved. No part of this publication may be reproduced, stored in a retrieval system, or transmitted, in any form or by any means, without the prior permission in writing of Oxford University Press, or as expressly permitted by law, by licence or under terms agreed with the appropriate reprographics rights organization. Enquiries concerning reproduction outside the scope of the above should be sent to the Rights Department, Oxford University Press, at the address above.

You must not circulate this work in any other form and you must impose this same condition on any acquirer

British Library Cataloguing in Publication Data
Data available

978-0-19-274085-4

10 9 8 7 6 5

Paper used in the production of this book is a natural, recyclable product made from wood grown in sustainable forests. The manufacturing process conforms to the environmental regulations of the country of origin.

Printed in India

Acknowledgements

The publishers would like to thank the following for permissions to use copyright material:

Cover illustrations: Lo Cole

Although we have made every effort to trace and contact all copyright holders before publication this has not been possible in all cases. If notified, the publisher will rectify any errors or omissions at the earliest opportunity.

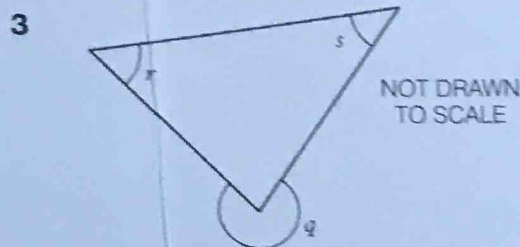
Links to third party websites are provided by Oxford in good faith and for information only. Oxford disclaims any responsibility for the materials contained in any third party website referenced in this work.

- 1 A chef is preparing some cakes. Each cake needs seven eggs. How many whole cakes can be made with 144 eggs?

A 19 B 20 C 21 D 7 E 1008

- 2 67 890 The digit 8 in this number has a value of 800. What is the value of the digit 7?

A 70 000 B 7 C 700 D 67 000 E 7000



This scalene triangle has angles q , r and s marked.

Angle r is 49° and angle s is 37° .

What is the size of angle q ?

A 266° B 86° C 286°
D 270° E 49°

- 4 Dev is drawing a plan of his garden. He is using a scale of 2 cm to 5 m. The driveway is 12.5 m long. How long should he draw the driveway on his plan?

A 12.5 m B 2 cm C 5 cm D 2.5 cm E 5.2 cm

- 5 Which answer has a different value to the others?

A $\frac{6}{8}$ of 100 B 75% of 100 C $\frac{3}{4}$ of 100 D 0.075 of 100 E $\frac{24}{32}$ of 100

- 6 A school emails a letter to the parents/guardians of all 780 pupils in the school. 85% of the parents/guardians have replied in the first week. What number have not replied in the first week?

A 673 B 117 C 850 D 127 E 663

- 7 Leila has been collecting football stickers for two years. Some cost her 10p and others cost her 5p. She has bought 56 of the more expensive stickers and 75 of the cheaper stickers. What is the total amount she has spent?

A £5.60 B £9.35 C £10.30 D £9.45 E £3.75

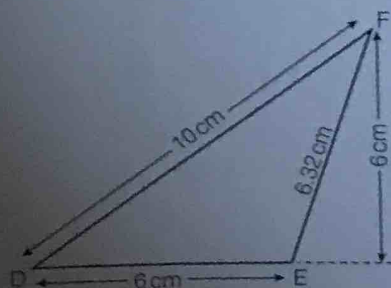
- 8 Gavin spent twice as long on the Internet on Tuesday as he did on Wednesday. He then spent three times as long on Thursday as he did on Wednesday. On Friday he spent two hours longer than he did on Thursday. If he spent eight hours on the Internet on Friday, how long did he spend on Tuesday?

A 4 hours B 2 hours C 6 hours D 3 hours 20 mins E 8 hours

- 9 The school maths club started in 2012 with 23 pupils. In 2013 there were twice as many as in 2012. In 2014 there were twice as many as in 2013. How many pupils were in the maths club in 2014?

A 82 B 23 C 92 D 46 E 2014

10



What is the area of triangle DEF?

A 12.32 cm^2 B 18.96 cm^2 C 60 cm^2
D 30 cm^2 E 18 cm^2

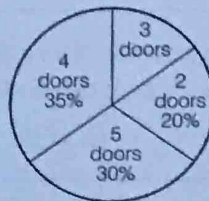
Continue to the next page

- 11 What is the missing number?

A 116 B 104 C 92
D 96 E 98

104	98	92
110	104	98
?	110	104

- 12 The pie chart shows proportions of number of doors on cars in a car park. There are 60 cars in the car park. How many cars have three doors?



A 18 B 15 C 12 D 9 E 6

- 13 A tablet case holds 28 tablet computers. How many tablet cases are needed to hold 532 tablets?

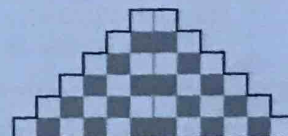
A 17 B 18 C 19 D 20 E 21

- 14 A giant stick of rock 2 m 8 cm long is cut into two equal pieces. How big is each piece?

A 1 m 40 cm B 14 cm C 14 m D 2 m 4 cm E 104 cm

- 15 Each of the white and grey tiles measures 25 cm \times 25 cm. What is the total area covered by the white tiles, in square metres?

A 0.5 m² B 1.5 m² C 2.5 m²
D 3.5 m² E 4.5 m²

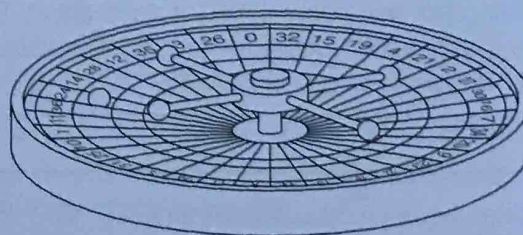


- 16 A roulette wheel has all the numbers from 0 to 36 equally spaced around the edge.

0 1 2 3 35 36

There is an equally likely chance of landing on any of these numbers. What is the chance of not landing on an odd number?

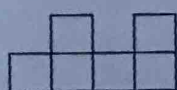
A $\frac{18}{37}$ B $\frac{18}{36}$ C $\frac{17}{36}$ D $\frac{19}{37}$ E $\frac{19}{36}$



- 17 Which number is divisible by 6 and 12?

A 18 B 24 C 30 D 42 E 54

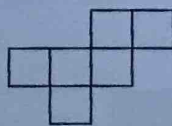
- 18



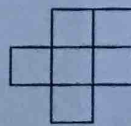
A



B



C



D



E

Only one of the above diagrams is the net of a closed cube. Which net can be folded to form the closed cube?

Please turn over

- 19 This machine doubles and then subtracts 7.



Which number has been put in?

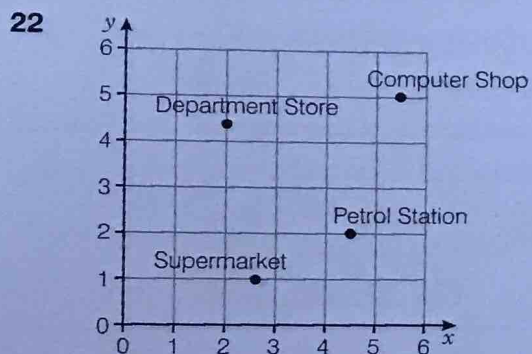
- A 46 B 92 C 107 D 53 E 53.5

- 20 Morag delivers papers seven days a week. She earns $\pounds x$ each weekday, and twice each weekday amount for each weekend day. How much does she earn for the whole week?

- A $\pounds 5x$ B $\pounds 7x$ C $\pounds 9x$ D $\pounds 11x$ E $\pounds 14x$

- 21 1 4 9 ... is the beginning of the sequence of square numbers.
 The difference between the first pair of square numbers is $4 - 1 = 3$ difference = 3
 The difference between the second pair of square numbers is $9 - 4 = 5$ difference = 5
 Continue the sequence and find which is the first difference between a pair of square numbers that is not a prime number.

- A 7 B 8 C 9 D 10 E 11



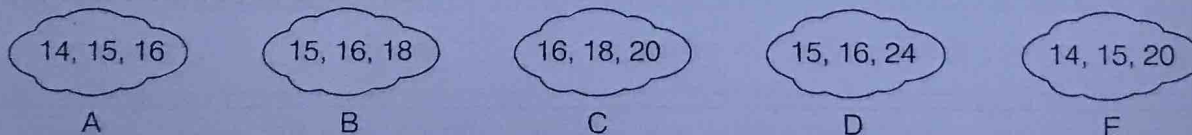
Write the coordinates of the Petrol Station.

- A (2, 4.5)
 B (2.5, 4.5)
 C (4.5, 2.5)
 D (4, 2)
 E (4.5, 2)

- 23 A skiing holiday costs $\pounds 780$ for each adult. There is a reduction of $\pounds 150$ for each child. How much would it cost for Angus, his older sister who is nine years old, his mum and dad and his granny to go on holiday?

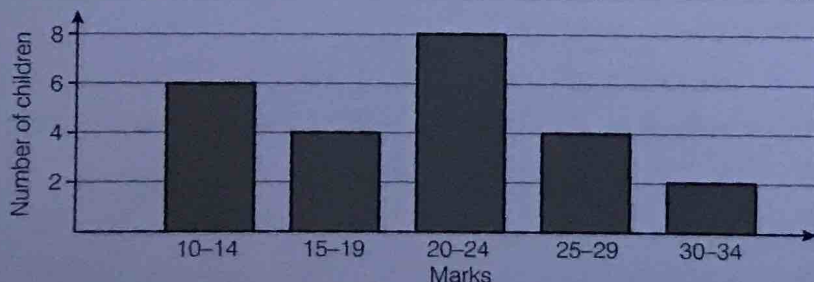
- A $\pounds 3600$ B $\pounds 2900$ C $\pounds 2750$ D $\pounds 3100$ E $\pounds 2450$

- 24 Look at these clouds of numbers.



In which cloud are all the numbers multiples of either 4 or 5?

- 25 This bar chart shows the marks in a geography test. How many children scored fewer than 20 marks?



- A 6
 B 8
 C 4
 D 18
 E 10

Continue to the next page

- 26 Which number which has the smallest value.
A 5.03 B 4.05 C 5.10 D 4.99 E 4.1

- 27 The subscription to join the 'Draw and Paint' evening class is £30.

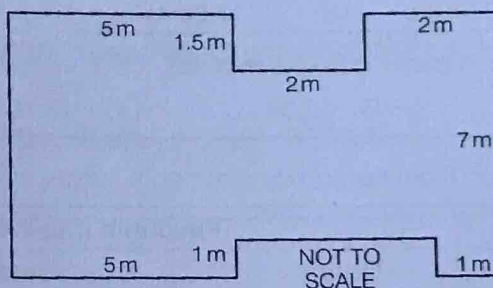
Plus: £2.50 admin charge
£1.10 for HB pencils
£3.50 for pastels
£4.75 for brushes
£2.15 for water colours
£1.65 for paper.


What is the total cost?

- A £46.55 B £45.65 C £16.65 D £46.60 E £30

- 28 Here is the plan of a room. What is the perimeter of the room?

- A 37.5 m
B 36.5 m
C 24.5 m
D 32 m
E 37 m



- 29  The original price of this book was £12.60. In the sale, it is on offer with 'A quarter off'. How much change will you get from £10?

- A £3.15 B £2.50 C 45p D 55p E 0

- 30 Westward Travel has reduced the price of holidays by 30% this week. The original price of the holiday I want to book was £540. How much will this holiday cost this week?

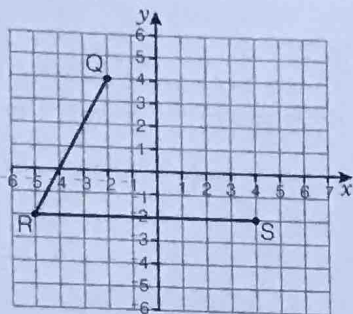
- A £378 B £510 C £270 D £162 E £362

- 31 You roll a fair dice numbered 1 to 6. In which of these are both statements true?

- A You have an even chance of rolling an odd number.
You are certain to roll a number less than six.
- B You have a greater than even chance of rolling a prime number.
You are certain to roll a number less than seven.
- C You have an even chance of rolling an odd number.
You are certain to roll a number less than seven.
- D You have a greater than even chance of rolling a prime number.
You are certain to roll a number less than six.
- E You have a greater than even chance of rolling a prime number.
You have an even chance of rolling an odd number.

Please turn over

32



When point T is added to the diagram, QRST is a parallelogram.
What are the coordinates of the point T?

- A (4, 4) B (1, 4)
C (4, -2) D (7, 4)
E (6, 4)

- 33 Here is part of a conversion table for pounds (lb) to kilograms (kg) and kilograms to pounds.
Example: 5 pounds = 2.27 kg

	pounds to kg	kg to pounds
5	2.27 kg	11.02 lb
6	2.72 kg	?
7	3.18 kg	15.43 lb
8	3.63 kg	17.64 lb

Which figure is missing from the table?

- A 11.44 lb B 12.03 lb C 13.10 lb D 14.44 lb E 13.23 lb

- 34 Tariq collected the following data during a survey of his year group.

	Favourite musical instrument		
	Drum	Recorder	Guitar
Boys	31	?	11
Girls	13	19	15

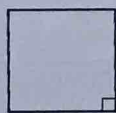
One hundred and ten pupils completed the survey. How many boys gave recorder as their favourite instrument?

- A 29 B 99 C 39 D 18 E 21

35



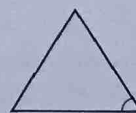
A



B



C



D



E

One interior angle on each polygon has been marked.

Example: The interior angle of a square is 90° .

Which of the regular polygons above has the largest interior angle?

- 36 If: $5x + 9 = 54 - 4x$ what is x ?

- A 5 B 9 C 63 D 45 E 8

- 37 There are 520 pupils at Sporting School. 433 take part in events at the annual sports day.
How many pupils do not take part in the events?

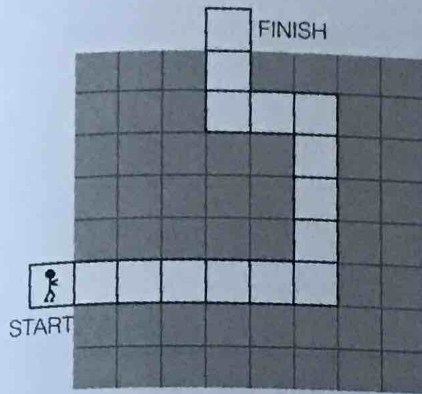
- A 77 B 87 C 97 D 433 E 93

- 38 Seb walks home from the supermarket carrying his shopping in two bags. They contain an average size chicken, a bag of sugar and a 500 g jar of coffee. What is most likely to be the approximate total weight of his shopping?

- A 0.5 kg B 1.5 kg C 3.5 kg D 6.5 kg E 10.5 kg

Continue to the next page

39



Your task is to guide the robot along the white squares on the plan.

It starts on the square marked START and finishes on the square marked FINISH.

It can only move FORWARD, TURN RIGHT 90° and TURN LEFT 90°.

Which are the correct instructions?

- A FORWARD 6, TURN LEFT 90°, FORWARD 4, TURN LEFT 90°, FORWARD 2, TURN RIGHT 90°, FORWARD 3
- B FORWARD 6, TURN RIGHT 90°, FORWARD 5, TURN RIGHT 90°, FORWARD 2, TURN LEFT 90°, FORWARD 2
- C FORWARD 5, TURN RIGHT 90°, FORWARD 4, TURN LEFT 90°, FORWARD 2, TURN LEFT 90°, FORWARD 2
- D FORWARD 6, TURN LEFT 90°, FORWARD 5, TURN RIGHT 90°, FORWARD 2, TURN LEFT 90°, FORWARD 2
- E FORWARD 6, TURN LEFT 90°, FORWARD 4, TURN LEFT 90°, FORWARD 2, TURN RIGHT 90°, FORWARD 2

- 40 These are the wages of seven people in a company.

£1100 £1140 £1110 £1120 £1130 £1210 £1425

What is the median wage?

- A £1133 B £1425 C £1100 D £1130 E £1120

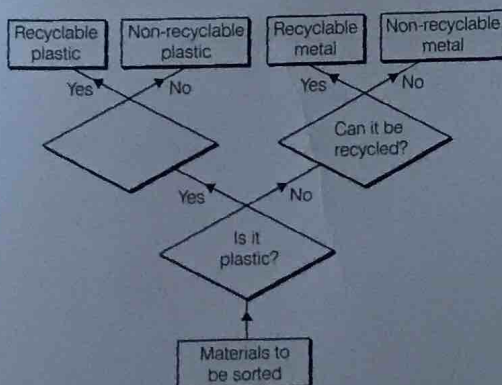
- 41 Heather thinks that her mum is drinking too many cups of coffee a day. Heather asks her mum some questions and completes this table.

Day	Mon	Tues	Wed	Thurs	Fri	Sat	Sun
Cups of coffee	5		6	4	5	3	9

Her mum says her mean is 6. How many cups did she drink on Tuesday?

- A 6 B 5 C 10 D 15 E 0

- 42 Liam used this decision tree to sort a pile of discarded plastic and metal.



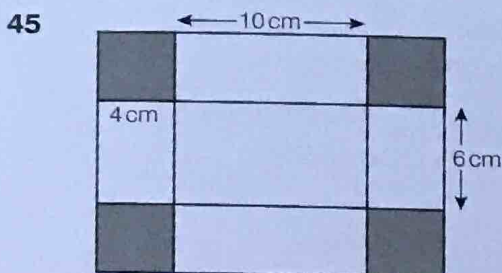
What is missing from the empty shape?

- A Recyclable
- B Non-recyclable
- C Can it be recycled?
- D Is it metal?
- E Is it non-recyclable?

Please turn over

- 43 Grace buys two computer games on holiday for €32 and €28. She calculates that one game costs £20 and the other costs £17.50. How much would a €4 adapter cost if her calculations are correct?
- A £2.00 B £2.50 C £3.50 D £4.00 E £4.50

- 44 You start with a number. You multiply it by itself. Then multiply this number by the start number. The new number is 125. What is the value of the start number?
- A 10 B 8 C 6 D 4 E 5



The shaded corners are cut out of this flat shape. It is then folded to make an open box.

What is the capacity of the box?

- A 240 cm^3
B 120 cm^3
C 260 cm^3
D 160 cm^3
E 220 cm^3

- 46 Deepak's street has 34 semi-detached houses and 16 detached houses. What fraction of the houses on the street are semi-detached?
- A $\frac{34}{16}$ B $\frac{8}{17}$ C $\frac{18}{16}$ D $\frac{17}{25}$ E $\frac{50}{34}$

- 47 If you reflect this right-angled triangle in its dashed side you will make a quadrilateral. What is the name of this quadrilateral?



- A square B rectangle C rhombus D parallelogram E kite

- 48
-
- The arrow shows how much the person weighs. The person is wearing a coat, which weighs 800 g. If they take it off and place it on the table, what would the new weight be?

- A 30.2 kg B 31.2 kg C 29.2 kg D 29.6 kg E 29.8 kg

- 49 $5p - 7q + 3r = t$
If $p = 7$, $q = 4$, $r = 9$, what is the value of t ?
- A 20 B 90 C 36 D 24 E 34

- 50 Which of these words does not have a vertical line of symmetry?
- A WOW B TOT C SOS D MUM E AXA